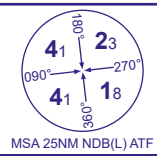


INSTRUMENT APPROACH CHART - ICAO

ABERDEEN/DYCE
LOC/DME
RWY 34
(ACFT CAT A,B,C,D)



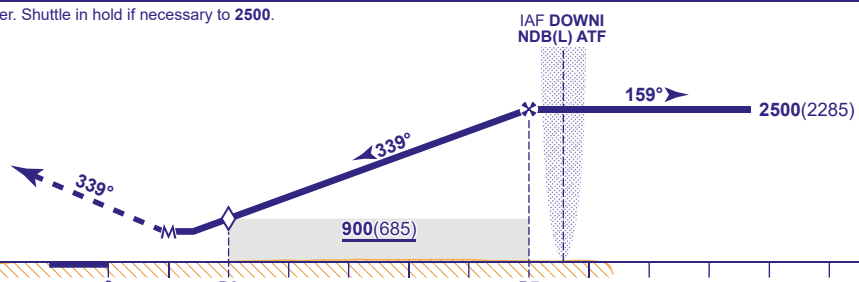
APP 119.055	ABERDEEN APPROACH	AD ELEVATION	215	TRANSITION ALTITUDE 6000
TWR 118.105	ABERDEEN TOWER	THR ELEVATION	215	
121.705	ABERDEEN GROUND	OBSTACLE ELEVATION	2122 AMSL (1907) (ABOVE THR)	
RAD 119.055, 128.305	ABERDEEN RADAR	BEARINGS ARE MAGNETIC		
ATIS 114.300 (VOR ADN)	ABERDEEN INFORMATION			



RECOMMENDED PROFILE Gradient 5.24%, 320FT/NM						
DME I-ABD(ADN)	7(14.4)	6(13.4)	5(12.4)	4(11.4)	3(10.4)	2(9.4) (SDF)
ALT(HGT)	2490(2275)	2180(1965)	1860(1645)	1540(1325)	1220(1005)	900(685)

Arrival via IAF **not below MSA or 2500** whichever is higher. Shuttle in hold if necessary to 2500.

MAPt I-ABD DME 1/ADN DME 8.4
(1NM from THR RWY 34)
Climb straight ahead to **3000**, then continue as directed.
RCF: Climb straight ahead to **2500**, then turn right to **NDB(L) ATF/DOWNI** at **2500**.



I-ABD DME zero ranged to THR RWY 34 (DME ADN reads 7.4NM at THR RWY 34)						0	D2 (ADN D9.4)	D7 (ADN D14.4)				
Aircraft Category		A	B	C	D	Rate of descent	G/S KT	160	140	120	100	80
OCA (OCH)	Procedure (see note 1)	700(485)	700(485)	700(485)	700(485)		FT/MIN	850	740	640	530	420
VM(C)OCA (OCH AAL)	Total Area	1130(915)	1320(1105)	1420(1205)	1420(1205)							
	East of RWY 16/34	720(505)	940(725)	1040(825)	1050(835)							

DIRECT ARRIVAL FROM AIRWAY P600 (Not available without VOR DME ADN)
Request clearance for direct approach before reaching GLESK. When cleared descend to **not below 4000** at ADN DME 26. At ADN DME 25, turn right onto nominal track 087° to intercept and follow ADN DME 20 arc anticlockwise. After passing VOR ADN R200 descend to **not below 3200**. (See plan).

ALTERNATIVE PROCEDURE BASE TURN REVERSAL
From NDB(L) ATF fly outbound on QDR 128° (CAT A,B) or QDR 090° (CAT C,D) descending as required to **not below 2500**. At I-ABD DME 10/ ADN DME 17.4 turn right to intercept the LOC. When established continue as for main procedure.

NOTE 1 When ADN DME used to establish SDF range, OCA(H) for all CATS raised to 760(545).
2 I-ABD DME and ADN DME not co-located. Ensure correct range cross check is used for the DME received.

CHANGE (9/23): VOR/DME ADN AERIAL ELEVATION.